

FileBound 6 – Improve the way you work



1 FileBound Server

- Unlimited Users
- Workflow Processing
- Electronic Forms
- Web Based



2 Capture

- Automatically Recognize and File Documents
- Point and Click Indexing with a Mouse
- Word Recognition for Searching
- Minimal Setup and User Training



3 Importing

- Bridge to Existing Digital Copier
- Automatic Routing of Incoming Faxes
- Drag and Drop from User's Desktop
- Automatic Synchronization with Existing Data Sources



4 Integration

- File Documents Directly from Microsoft Word
- Automatically Update Microsoft Dynamics GP or QuickBooks with Invoice Data
- Save Email Directly from Microsoft Outlook
- Store and Retrieve Information from Oracle, SQL or MySQL Databases



5 Server Processing

- Improve Productivity through Global Searching
- Automate and Schedule Business Processes
- Enhanced Processing of Word Recognition
- Easily Maintain Storage Areas



6 Delivery Options

- On-Site™
- On-Demand™
- Express™



7 Mobile

- Access to critical information when you are out of the office
- Complete assigned work from your phone
- Intelligently converts documents for viewing on your mobile device



FileBound 6 represents the next evolution of the FileBound Document Management Solution. This new release addresses the three major market demands that are driving the mid-market document management space, including business process management (BPM), enhanced content discovery and mobile device support.

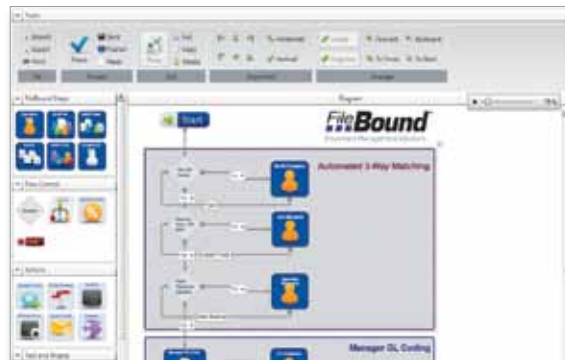
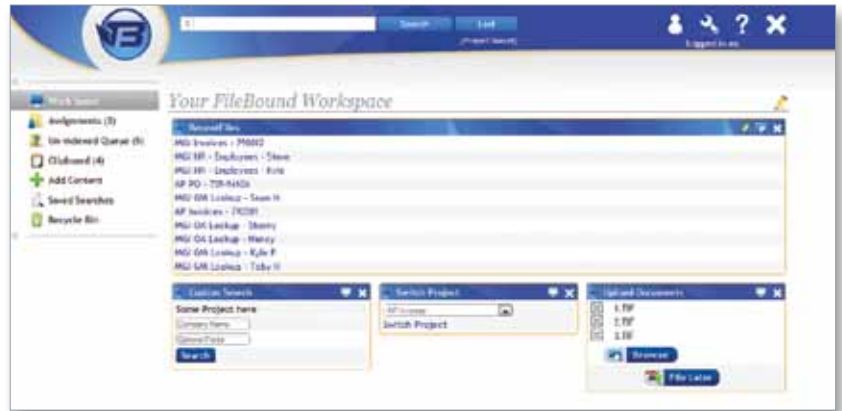


FileBound 6 Delivers Results

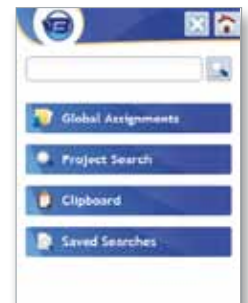
FileBound 6 improves the way you work by connecting you with the information you need to get the job done. By allowing you to customize your workspace, the solution brings focus to your tasks and allows you to find your information, no matter where you are. Simply use your browser to connect, authenticate and find what you need, whether you're in the office or on the road with FileBound Mobile. With the enhanced FileBound Workflow you can automate the way you process, exchange and account for information within your organization.

The capabilities found in FileBound 6 used to be out of reach for most organizations because of cost and technical complexity. FileBound 6 affordably delivers the capabilities that organizations of all sizes need to improve the way they interact with content and each other.

FileBound 6 continues to support the peripheral capabilities delivered with FileBound solutions that include document and data importing, automated document capture and integration with most line of business applications.



- RICH USER EXPERIENCE
- ENHANCED FINDABILITY
- WORKFLOW PROCESSING
- VIEW ANYWHERE



FileBound 6 Server Requirements

Operating System	Minimum: Microsoft Windows Server 2003 32 bit Recommended: Microsoft Windows Server 2008 64 bit <i>Note: Microsoft .NET 4.0 Framework is required.</i>
Database	Minimum: Microsoft SQL Server 2005 32 bit Recommended: Microsoft SQL Server 2008 64 bit
Memory	Minimum: 2 GB RAM Recommended: 4 GB RAM
Storage	Minimum: 100 GB

FileBound 6 Workstation Requirements

Operating System	Microsoft Windows XP or later Apple Mac OS X
Memory	Minimum: 1 GB RAM Recommended: 2 GB RAM
Supported Browsers	Microsoft Internet Explorer Apple Safari Google Chrome Mozilla Firefox

**Actual requirements may vary based on the configuration of the FileBound system.
For implementation specific requirements please refer to the FileBound Hardware Configuration Guide.*